



• ——— Out of the Ordinary ——— •

# FURNITURE.

IN STORE BROCHURE

**INTERIOR BROCHURE**  
A catalog of our in store furniture and designs **2024**

Explore our curated collection of bespoke, handcrafted furniture, blending timeless elegance with exceptional craftsmanship. Each piece, made from the finest solid wood, reflects our legacy of quality and artistry.

HANDCRAFTED **W&W** FURNITURE  
INDIA

**IN-STORE BROCHURE**

[www.wandwindia.com](http://www.wandwindia.com) | [info@wandwinda.com](mailto:info@wandwinda.com)

volume 1-2023/24



• — Out of the Ordinary — •

## Craftsmanship, rooted in tradition and committed to quality.

*At **W and W India**, our design philosophy is deeply rooted in the belief that true beauty lies in the perfect balance of form and function. Each piece we create is a harmony of elegant proportions, designed to not only enhance the aesthetic appeal of any space but also offer long-lasting comfort and usability. We are committed to the idea that furniture should transcend the ordinary, elevating the ambiance of any room through its craftsmanship and attention to detail.*

*Our in-house production allows us to meticulously oversee every step of the design and manufacturing process, ensuring that each creation reflects our stringent quality standards. From the careful selection of premium materials to the hand-finishing of every piece, our craftsmen pour their passion and expertise into making every detail count. This hands-on approach gives us complete control over the process, enabling us to deliver pieces that stand the test of time.*

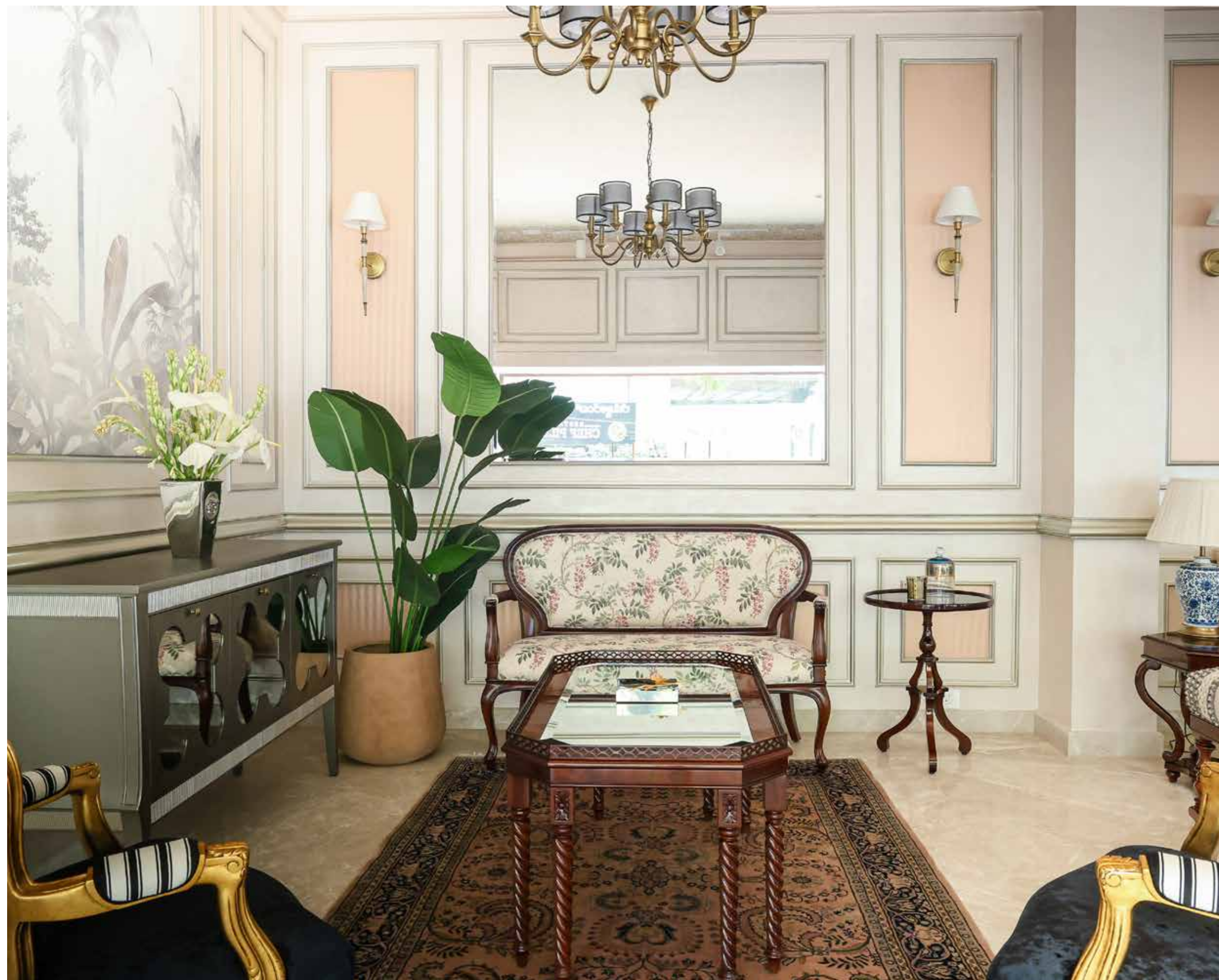
*We draw on our rich heritage – spanning five generations of fine furniture craftsmanship – to create designs that blend timeless tradition with contemporary sensibilities. Above all, we place the customer at the heart of everything we do. Every design is a collaborative effort, crafted to suit individual preferences while maintaining the high standards that define our brand. At **W and W India**, our furniture is not just made to be seen; it is made to be experienced.*

# THE CLASSICAL COLLECTION

*Our Classical Collection draws inspiration from the refined elegance of 17th and 18th-century European styles, particularly French design. Reimagined for modern interiors, each piece blends ornate detailing with contemporary functionality. We use traditional woodcraft techniques and hand-polish finishes that enhance the natural beauty of solid wood, creating timeless, luxurious furniture that resonates with the charm of classical Europe while fitting seamlessly into today's homes.*

## The furniture shown in the image

1. The French Settee
2. The Clover Console
3. The French gilded arm chair
4. The Peg Table
5. The Baroque Center Table



# THE FRENCH SETTEE

## *Design and Upholstery*

*This exquisite Louis XV-style French settee, finished in rich dark walnut Sapelli mahogany, exudes refined elegance. The carved foliate crest and scrolled handholds flow gracefully into cabriole legs ending in charming whorl feet, adding a touch of classical sophistication. Upholstered in a delicate wisteria floral fabric, the settee's intricate craftsmanship complements the flowing silhouette of its petite frame, subtly inspired by Victorian-era design.*



## *Detailing*

*Relying on the finesse of its detailing, this piece showcases how intricacy can transform a simple form into a luxurious focal point, perfect for any elegant space. At our design-first company, we focus on the intricacies and quality that transform each piece into a true masterpiece, blending timeless elegance with exceptional craftsmanship.*



# Description

## Design and Inspiration

The French settee draws inspiration from the opulent Louis XV style, known for its graceful curves and intricate detailing. The flowing silhouette, scrolled handholds, and cabriole legs are hallmarks of this period, while the carved foliate crest adds a touch of regal sophistication. This settee also takes subtle cues from Victorian design, particularly in its petite frame, blending two iconic eras to create a timeless piece that embodies classical European elegance reimagined for today's interiors.

## Fabric and Upholstery

Upholstered in a luxurious wisteria floral fabric, this settee combines soft, delicate patterns with a rich color palette, balancing the ornate carving with a light, airy feel. The upholstery complements the piece's elegant frame, offering both comfort and visual appeal. The floral motif subtly recalls the decorative textiles of French aristocracy, creating a refined look that enhances the overall sense of luxury while inviting relaxation.

## Wood and Finish

Crafted from premium dark walnut Sapelli mahogany, the settee's frame highlights the intricate carving and fine craftsmanship of the piece. The deep, rich tones of the wood are accentuated by a hand-applied polish, bringing out the natural grain and adding depth to the finish. The warmth of the wood contrasts beautifully with the delicate upholstery, offering a refined yet durable foundation for this statement piece. The cabriole legs and whorl feet showcase the precision in woodworking, ensuring lasting elegance and stability.

## Dimensions

Settee dimensions -

**54 inches** wide x **37 inches** height x **23.25 inches** depth

Seat dimensions -

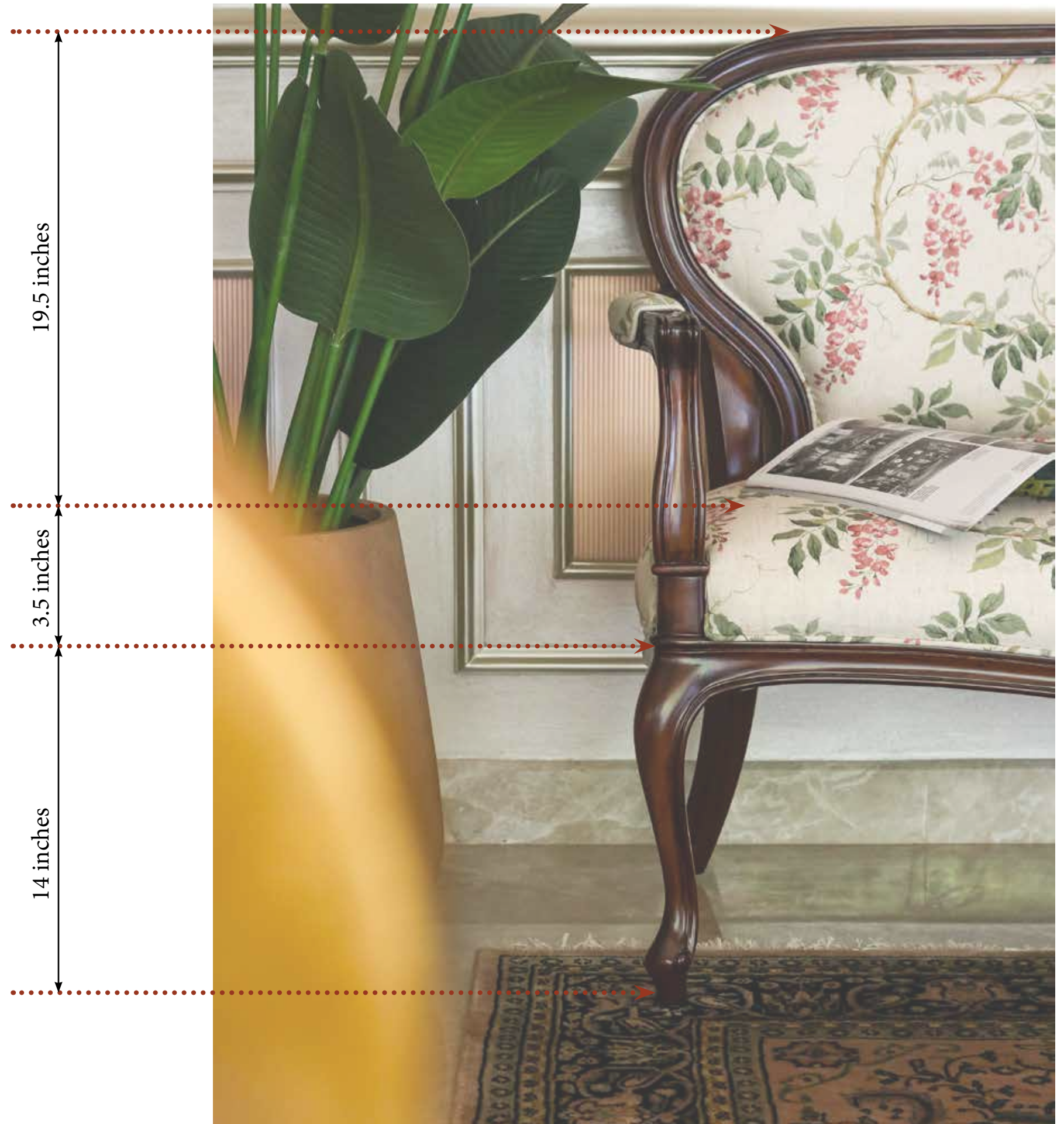
**51 inches** wide x **21.5 inches** deep x **17.5 inches** from floor

Arm rest height from seat -

**9 inches** from seat

Back rest height from seat-

**19.5 inches** from seat





## THE CLOVER CONSOLE

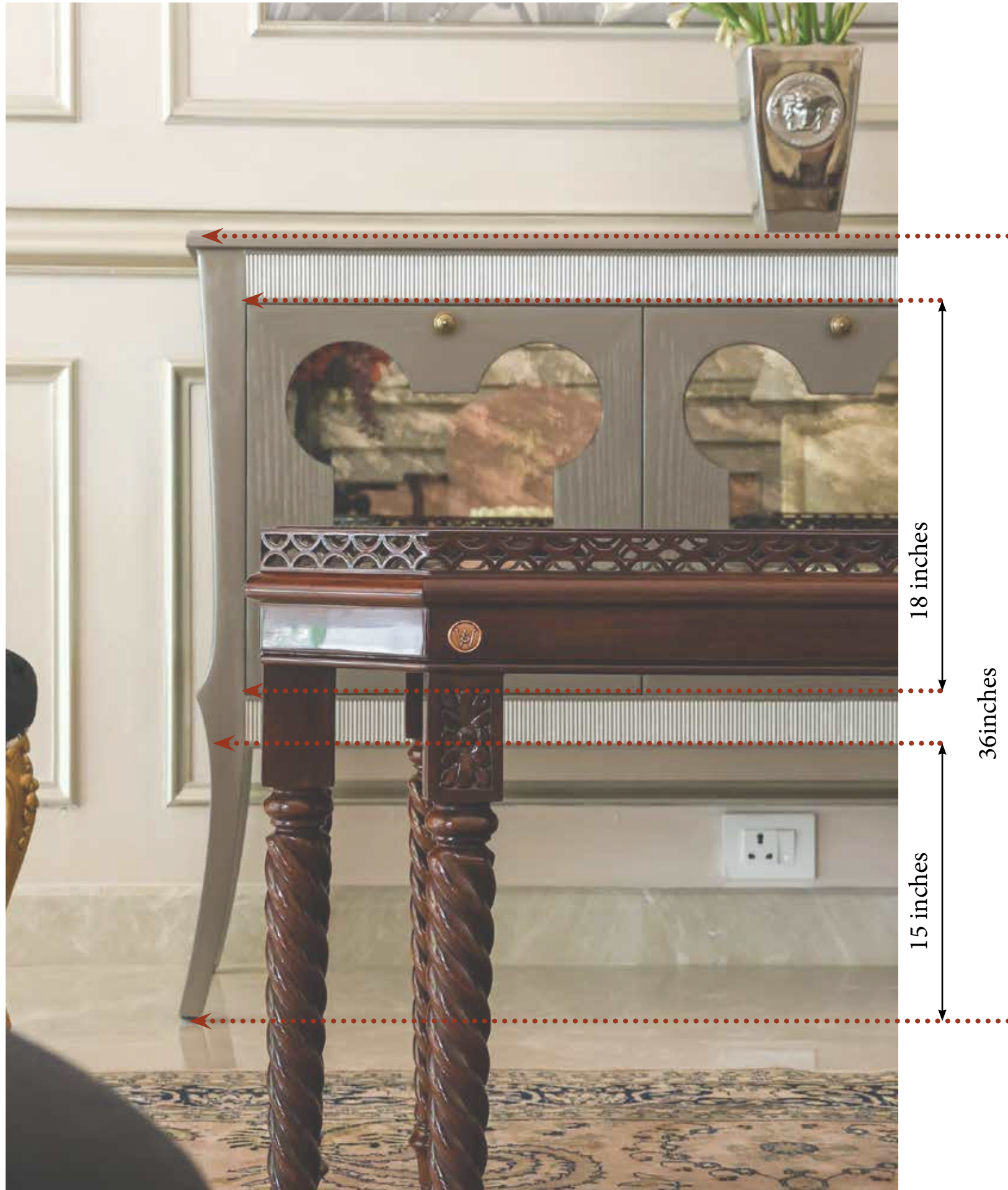
*This elegant console is meticulously crafted from pure Sapelli mahogany and finished with our new signature silver grey polish, giving it a luxurious yet contemporary appeal. The console's standout feature is its beautifully designed shutters, adorned with antique glass cut in an intricate clover shape, which immediately creates a sense of awe and sophistication. The shimmering glass catches the light, adding a touch of elegance and artistry to the piece.*

*Framing the shutters are two ribbed panels, each 4 inches thick, painted in a rich champagne gold. These panels enhance the visual appeal of the console, providing a striking contrast to the silver grey finish and highlighting the craftsmanship in every detail. The ribbed texture adds depth, while the champagne gold offers a subtle yet luxurious shine that complements the overall design.*

*The solid mahogany frame, finished to perfection in the same silver grey, seamlessly ties the piece together, making it both visually cohesive and structurally robust. The gently curving legs give a nod to classical design, balancing the console's modern elements with timeless elegance. This piece is a true masterpiece, blending traditional craftsmanship with contemporary finishes, perfect for elevating any interior space.*







## Description

### Design and Inspiration

The design of this console is a blend of classical and modern influences, carefully balancing ornate details with contemporary touches. The inspiration stems from the elegance of Baroque and Dutch design traditions, which are known for their intricate detailing and bold forms. The console's gracefully curving legs echo classical furniture styles, adding a timeless element to its silhouette. The overall structure is sleek and refined, with a modern sensibility, making it a versatile statement piece. The mix of classical form with modern finishes creates an extraordinary visual appeal, bridging past and present through exceptional craftsmanship.

### Polish and Finish

Crafted from the finest Sapelli mahogany, the console is a testament to the durability and beauty of solid wood. The mahogany's natural grain is enhanced by our new trademark silver grey finish, which adds a contemporary elegance while preserving the richness of the wood beneath. This signature finish has been carefully developed to offer a soft sheen, subtly reflecting light and adding depth to the piece. The warm tones of the mahogany, paired with the cool, metallic hue of the finish, create a sophisticated contrast. The champagne gold ribbed panels framing the shutters provide a luxurious touch, making the piece stand out as a work of art.

### Wood and Finish

The console's 18-inch high shutters are truly the centerpiece of the design. Embellished with antique glass, cut into a captivating clover pattern, these shutters are inspired by the decorative grandeur of Dutch and Baroque design. The clover motif, a hallmark of Baroque aesthetics, adds a sense of drama and elegance to the piece, while the antique glass reflects light beautifully, creating an eye-catching focal point. The delicate glasswork is framed by ribbed panels, giving it a refined border that emphasizes the craftsmanship. These shutters not only serve as a functional element but also elevate the overall design, transforming the console into a statement of luxury and elegance.

### Dimensions

Console dimensions -

**60 inches** wide x **36 inches** height x **18 inches** depth

Shutter dimensions:

**18 inches** wide x **18 inches** high ( 3 shutters)



# THE GILDED FRENCH ARM CHAIR



## *Design and Upholstery*

*Inspired by the grandeur of French aristocratic salons, this gold-gilded armchair is a true masterpiece of design and craftsmanship. The antique gold foiling brings an air of opulence, while the bold black and white upholstery on the seat back and rear creates a striking contrast, reminiscent of classic French interiors. The seat itself, upholstered in velvety black fabric, subtly changes tone as light falls upon it, giving the piece a sense of dynamic luxury.*

## *Detailing*

*To tie it all together, the same black and white striped fabric is subtly incorporated into the seat's design, a testament to our meticulous attention to detail. The solid wood frame features gracefully carved cabriole legs with a scrolled toe, adorned with floral motifs that evoke the Rococo style's embrace of nature and elegance.*

*This armchair is more than just furniture – it's designed to be the statement piece in any home, where its gilded finish and luxurious upholstery come together to add a layer of refined sophistication to your space, captivating anyone who sees it.*



# Description

## Design and Inspiration

Inspired by the grandeur of French aristocratic salons, this gold-gilded arm-chair is a true masterpiece of design and craftsmanship. The piece draws heavily from the classic French interiors, capturing their elegance and opulence. Its bold black and white upholstery on the seat back and rear creates a striking contrast, making it a standout piece that evokes timeless luxury.

## Polish and Finish

The antique gold foiling used on the solid wood frame brings an air of opulence to the chair. The carefully carved cabriole legs feature a scrolled toe, adorned with intricate floral motifs. These carvings are a nod to the Rococo style, which embraced nature-inspired elegance, adding depth and sophistication to the arm-chair's design.

## Wood and Finish

The seat is upholstered in rich, velvety black fabric that subtly changes tone with the light, enhancing the chair's luxurious feel. To add a cohesive touch, the black and white striped fabric is subtly incorporated into the seat's design. This attention to detail not only adds visual interest but also ties the entire piece together, ensuring that it's as comfortable as it is stylish.

## Dimensions

Chair Dimensions

**24 inches** wide x **36 inches** height x **22.5 inches** depth

Seat dimensions

**22 inches** wide x **18.5 inches** high

Arm Rest height from seat

**7 inches** from seat

Seat height from floor

**17 inches** from seat





## THE PEG TABLE

### Design and Inspiration

The beautiful peg draws inspiration from classical elegance, combining traditional craftsmanship with modern aesthetics. Its circular top, carefully shaped and adorned with exquisite marquetry veneer, reflects intricate detailing that adds a touch of luxury. The small half-inch piping around the edge not only enhances the visual appeal but also adds a subtle yet sophisticated border, perfect for accentuating its form. The fluidity of its design ensures that this piece seamlessly complements both contemporary and classic interiors, making it a timeless addition to any space.

### Polish and Finish

Crafted from solid Sapelli mahogany, the peg stands as a testament to the rich, warm tones of this prized wood. Known for its durability and natural beauty, Sapelli mahogany ensures the piece retains its elegance for years to come. The high-gloss melamine polish in dark walnut elevates the natural grain of the wood, giving it a lustrous finish that catches the eye from every angle. The careful finishing process adds depth and richness, making the piece not just functional but a centerpiece of any room.

### Customisation

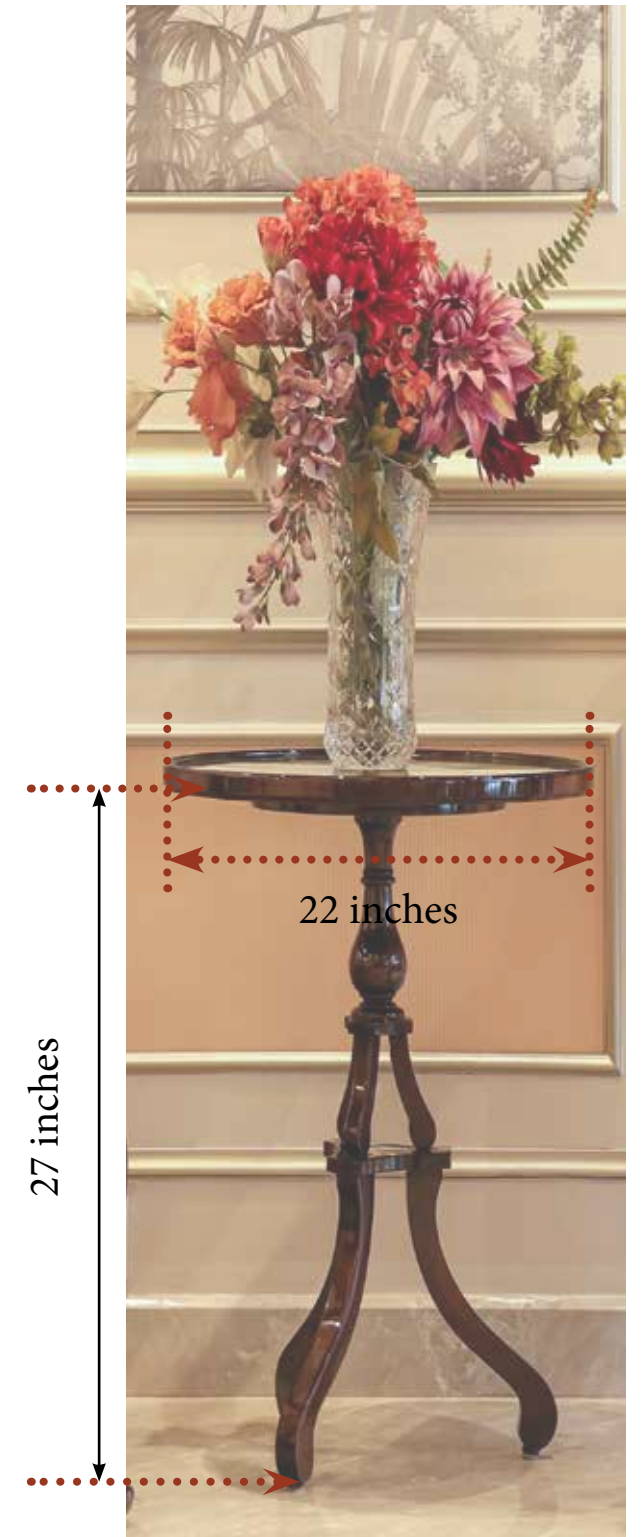
This beautiful peg offers a world of possibilities in customization. Whether you prefer slight alterations to the dimensions, finish, or veneer pattern, each piece can be tailored to suit individual tastes. The turned leg, which gracefully branches into three cabriole-like legs, is designed to offer both stability and charm, ensuring the piece remains versatile for various settings. From the choice of marquetry to different finishes, the peg can be personalized to reflect unique styles and preferences, ensuring it remains as distinctive as its owner.

### Dimensions

Peg table dimensions

**22 inches** top

**27 inches** high



# THE CENTRE TABLE

## Design

*This stunning table stands on eight elegantly twisted barley legs, reminiscent of Baroque spiral columns, which infuse it with a unique and distinguished character. The graceful curves of the legs evoke the opulence of classic European design, while providing a strong yet refined foundation. Above the legs, intricate floral motifs are meticulously carved, further enhancing the table's timeless beauty and adding a layer of artisanal craftsmanship.*



## Detailing

*The tabletop, finished with a sleek mirrored surface, offers a touch of modernity, perfectly balancing the classical elements of the base. Framed by delicately carved solid wood filigree, the tabletop catches light beautifully, creating a striking visual contrast that heightens the table's elegance.*

*Finished in a high-gloss melamine polish with a rich dark walnut hue, this table merges classical craftsmanship with contemporary sophistication. Its bold presence, accentuated by the twisted legs and intricate details, makes it a luxurious centerpiece for any refined interior, seamlessly blending traditional charm with modern allure.*



# Description

## Inspiration

*This table's design draws inspiration from the grandeur of Baroque artistry, with its timeless elegance and meticulous craftsmanship. The intricate floral motifs carved above the legs showcase the artisan's attention to detail, blending seamlessly with the overall aesthetic. The solid wood filigree surrounding the edges further elevates the table's sophistication, adding a touch of classical charm to the piece. Every element is carefully balanced to create a harmonious blend of tradition and luxury, making it a standout piece in any interior.*

## Polish and Finish

*The table is finished with a rich dark walnut hue, brought to life by a high-gloss melamine polish. This sleek finish highlights the natural beauty of the wood, enhancing the deep, warm tones while providing a protective layer. The high-gloss effect adds a modern touch to the piece, ensuring that it fits perfectly in contemporary settings while preserving the timeless allure of its classical design. The polish not only amplifies the visual appeal but also ensures durability, making it a lasting investment in both beauty and function.*

## Barley Twist legs and Filigiri work

*Standing on eight elegantly twisted barley legs, reminiscent of Baroque spiral columns, this table exudes character and strength. The intricate twist of each leg adds a sculptural quality, blending both structural integrity and visual grace. The floral filigree carvings above the legs add an extra layer of refinement, showcasing the artist's dedication to detail. These elements, combined, give the table a unique and distinguished character, perfectly marrying form and function with classical flair.*

## Mirror Top

*Crowning the table is a sleek mirrored top that adds a contemporary twist to the otherwise traditional design. The mirrored surface reflects light beautifully, making the room feel brighter and more spacious while enhancing the overall grandeur of the table. Framed by delicately carved solid wood filigree, the mirror top is both functional and ornamental, creating a striking contrast between modern materials and classical craftsmanship. It serves as a focal point, adding depth and sophistication to the room.*

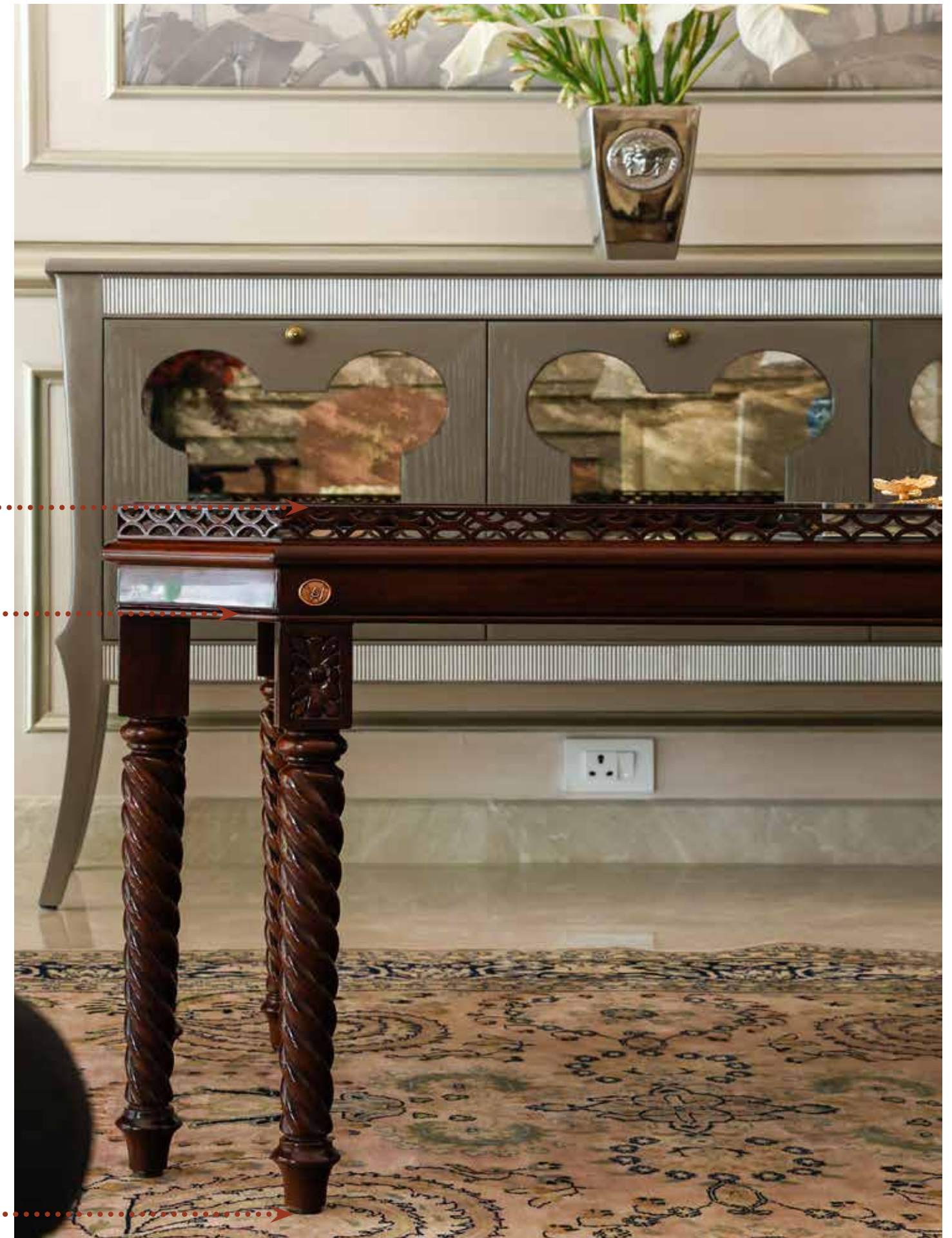
## Dimensions

*Dimensions for the Centre Table*

**27 inches** wide x **48 inches** height x **21 inches** depth

4.25 INCHES

18.75 inches



THE  
WING BACK AND  
BUFFET CONSOLE



# THE WING BACK CHAIR

## *Inspiration*

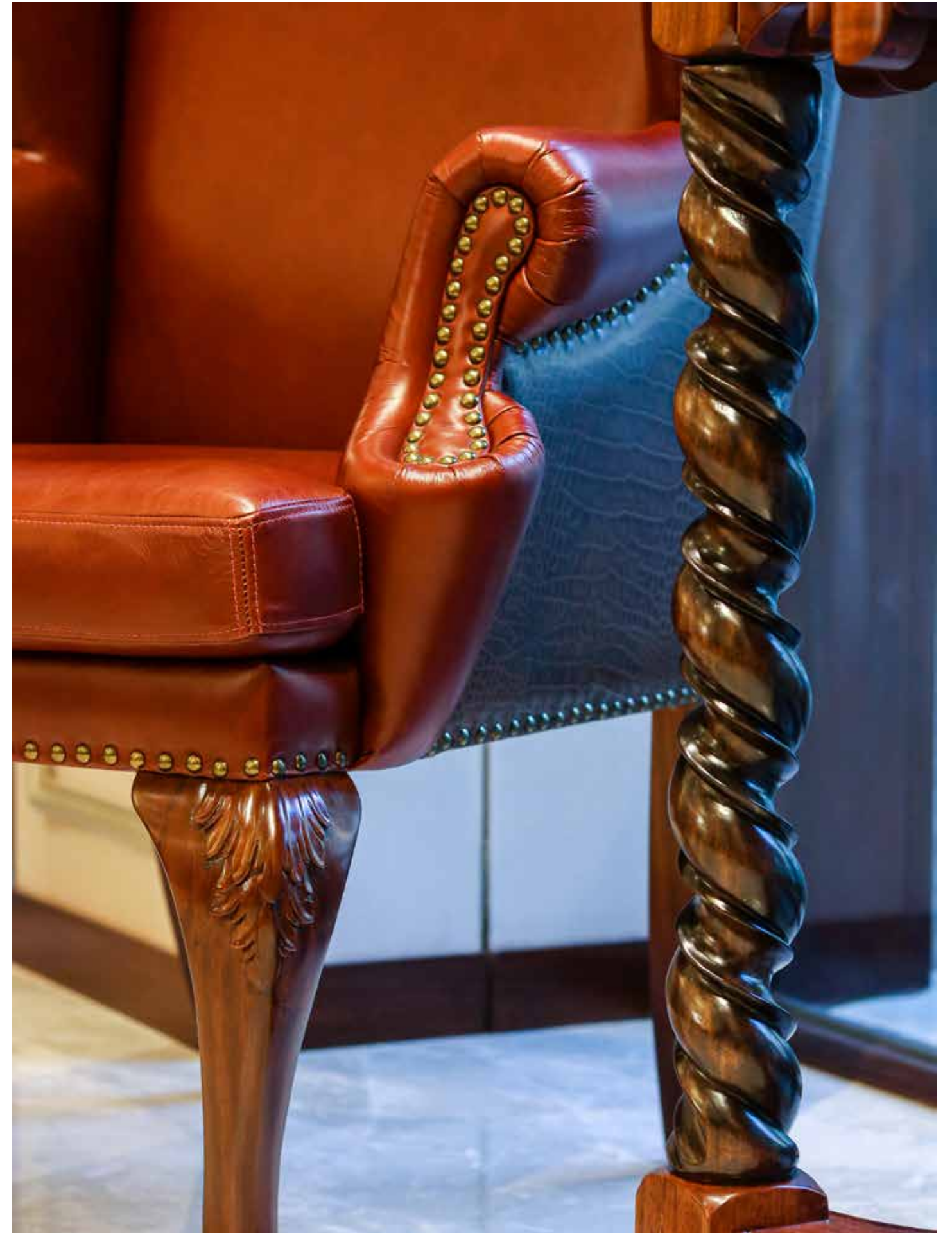
*Inspired by the opulent salons of early European aristocracy, our wing back chair draws on the grandeur and elegance of the 18th-century courts. We envisioned a piece that reflects the refined taste of those eras, where furniture was not just functional but a statement of status and artistry. The use of rich cognac aniline leather symbolizes warmth and sophistication, much like the interiors of old-world libraries and drawing rooms.*



## *Detailing*

*The crocodile leather detailing on the back and sides takes inspiration from the exotic materials once coveted by explorers and collectors. This luxurious texture, paired with the antique brass pins, harkens back to a time when every detail was carefully considered, a nod to craftsmanship as a form of art.*

*Our cabriole legs, with ivy leaf motifs, are a tribute to nature's influence on classic European design, where organic forms were celebrated for their grace. In creating this chair, we combined centuries of design heritage with our commitment to quality,*





## Description

### Design and Detail

*The wing back chair is inspired by the grandeur and elegance of 18th-century European courts, combining refined artistry with functional design. It reflects the opulence of early aristocratic salons, where furniture was both a statement of status and craftsmanship.*

### Upholstery and Leather

*Crafted from rich cognac aniline leather, the chair exudes warmth, depth, and sophistication, reminiscent of classic old-world interiors like libraries and drawing rooms. The luxurious leather not only provides a supple, inviting surface but also ages beautifully, gaining character over time. On the back and sides, the exotic crocodile leather detailing adds an unexpected layer of texture, evoking the exotic materials once prized by aristocrats and collectors. The chair is adorned with antique brass pins, meticulously hand-set to create a striking contrast against the leather, emphasizing the careful attention to detail and craftsmanship that went into its creation.*

### Woodwork and Finish

*The cabriole legs, with their elegant curves, are adorned with ivy leaf motifs, paying tribute to nature's influence on classic European furniture design, where organic forms were highly celebrated. These legs are not only structurally sound but also serve as artistic elements that enhance the overall elegance of the chair. Finished in a warm, rich tone that complements the leather upholstery, the woodwork is smooth and polished to perfection, creating a sense of harmony between the natural grain of the wood and the fine detailing. The antique brass pins running along the leather seams add a refined touch, enhancing the chair's luxurious aesthetic while showcasing the exquisite craftsmanship behind its construction.*

### Dimensions

*Dimensions outer*

**30 inches** wide x **45 inches** height x **27 inches** depth

*Dimensions inner*

**25 inches** wide x **21 inches** depth

*Arm Rest height from seat*

**9 inches** from seat

*Seat height from floor-* **20.5** from floor



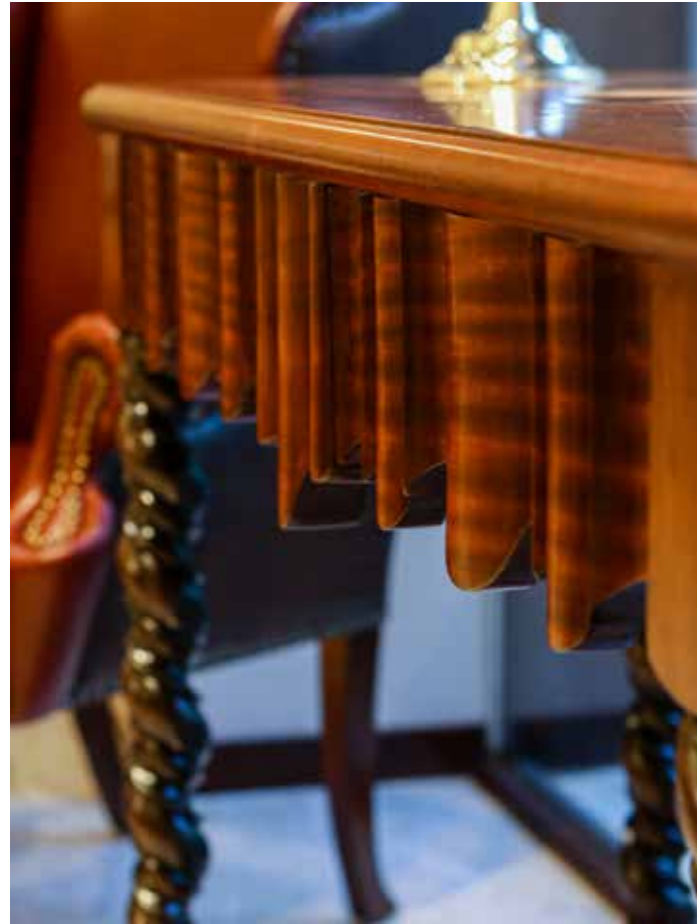


## THE BUFFET CONSOLE

*This exquisite buffet console is a stunning representation of French Louis XIII style, featuring elegant barley twist legs inspired by Baroque spiral columns. The fine 19th-century French and Portuguese design showcases thick, spiral-carved legs connected by barley twist stretchers, finished with a decorative finial at the base for added structure and artistry.*

*The console's solid wood drawer fascias and side details are adorned with Italian scallops, providing an intricate silhouette. The lower frame features graceful French curves with interconnecting members and a lower finial, enhancing its classic sophistication.*

*The top surface is beautifully embellished with marquetry, combining ash wood, teak, rosewood, and red cedar. This intricate woodwork not only reflects fine craftsmanship but also brings a unique touch of elegance to any space, adding a refined sophistication that will transform your home.*



## Description

### Design

*This buffet console is a refined embodiment of the French Louis XIII style, drawing from the grandeur of 19th-century French and Portuguese influences. Its balanced proportions and elegant form create a timeless piece that exudes both functionality and artistic beauty. The console's distinctive character lies in its ornate design elements, making it a centerpiece for any classical or contemporary space.*

### Marquetry

*The top surface of the console is an exquisite display of marquetry, crafted from a selection of premium woods including ash wood, teak, rosewood, and red cedar. This delicate wood inlay technique adds visual richness, while the combination of textures and hues creates a stunning focal point. The marquetry reflects the fine craftsmanship behind the piece, adding an element of luxury that elevates its aesthetic.*

### Detailing

*The console showcases exceptional craftsmanship through its solid wood drawer fascias and side panels, which are adorned with intricate Italian scallops. The graceful French curves on the lower frame, combined with interconnecting members, add fluidity to the overall design. These thoughtfully incorporated details bring a sophisticated silhouette that blends form and function seamlessly.*

### Barley Twist Legs

*The console stands on elegant barley twist legs, inspired by Baroque spiral columns. These thick, spiral-carved legs not only provide stability but also serve as a distinctive design feature, enhancing the piece's historical and artistic appeal. Connected by barley twist stretchers, the legs further highlight the classic French influence, adding a sense of grandeur to the console.*

### Finial

*At the base of the console, a decorative finial completes the design with an artistic touch. The finial serves as a structural anchor for the barley twist stretchers while adding a sculptural element to the overall form. This final detail brings harmony to the piece, showcasing the meticulous attention to craftsmanship and design.*

### Dimensions

*Dimensions for Buffet Console*

**48 inches** wide x **36 inches** height x **27 inches** depth





## THE Double decker Table

### Design

*This stunning double-decker table is a perfect fusion of form and function, crafted from solid Sapelli mahogany and finished in a rich dark walnut hue with a high-gloss finish that accentuates the natural beauty of the wood. The table's unique design features two levels, making it highly practical and versatile. It effortlessly complements most furniture heights, serving as an ideal side table for various settings, whether placed beside a sofa, an armchair, or as a standalone accent piece.*

### Details

The table stands on slender, gracefully turned legs, expertly shaped on a wood lathe. Each leg is adorned with delicate floral motifs, adding a touch of refined elegance that contrasts with the sleek silhouette. These detailed carvings highlight the craftsmanship and artistry behind the table, ensuring it serves as both a functional item and a decorative work of art.

What sets this table apart is the attention to detail in its ornate features. Hand-carved with precision, the intricate floral carvings and motifs further elevate the table's aesthetic, offering a rich visual experience. The result is a beautifully crafted piece that enhances the charm of any room, blending classical elegance with modern practicality.

### Dimensions

*Dimenions for Double decker table*  
**27 inches** wide x **36 inches** high x **15 inches** depth

# THE CLASSICAL COLLECTION

*This collection of handcrafted furniture showcases a harmonious blend of tradition and modernity. The three-seater offers timeless comfort with plush upholstery and a solid wood frame, while the dhurrie bench brings texture and color through its handwoven fabric. The center table exudes elegance with its minimalist design, providing ample surface space. The insignia chair stands out with its high backrest and refined detailing, adding sophistication to any room. Finally, the hexagonal side table features a striking geometric design, per-*



## The furniture shown in the image

1. The Three Seater
2. The Dhurrie Bench
3. The Center Table
4. The Insignia Chairs
5. The Hexagonal Side Table

# THE THREE SEATER

## *Design*

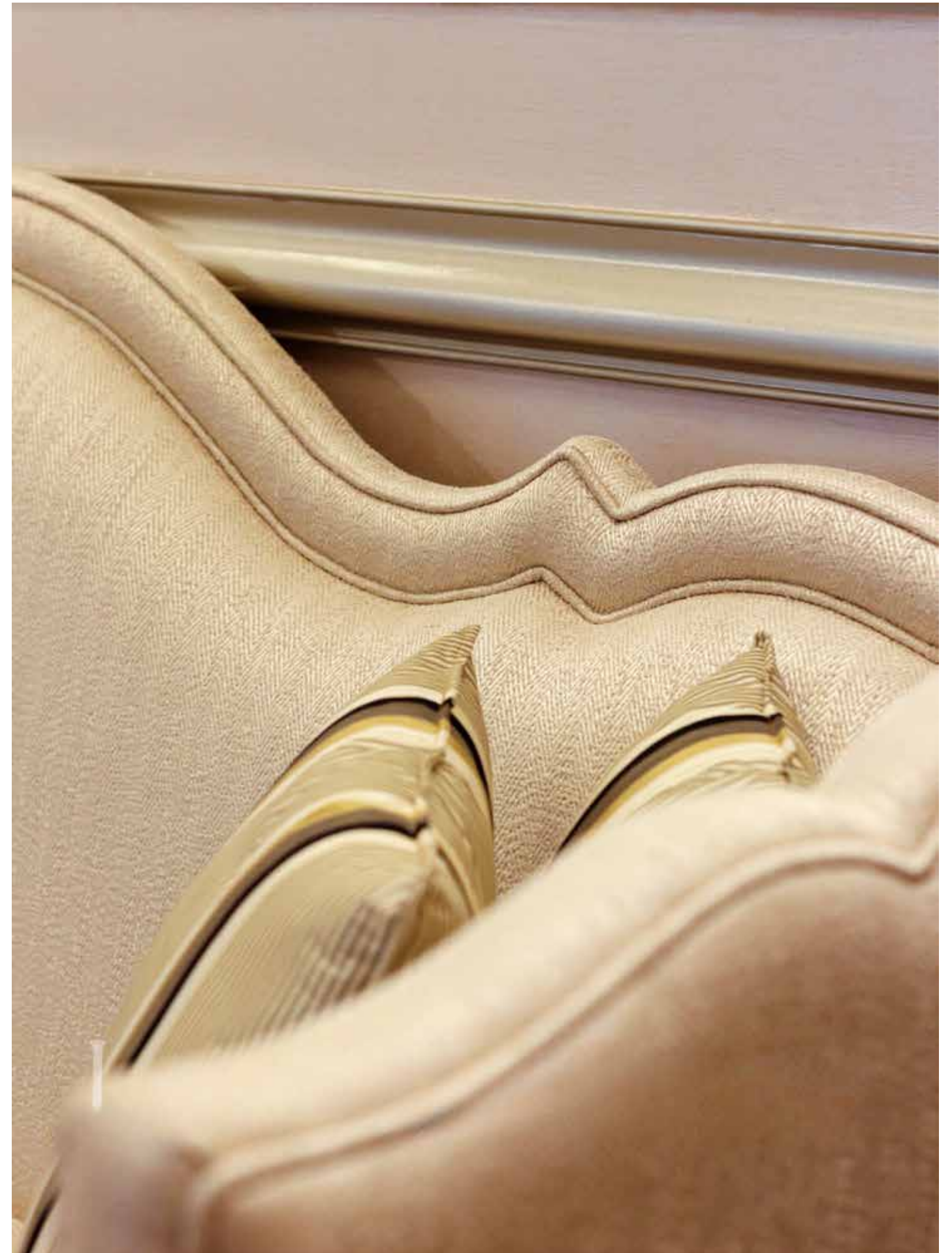
*This elegant, classical French-inspired three-seater sofa is upholstered in luxurious Cigarelllo fabric from the House of Atmosphere, featuring a striking herringbone pattern. The fabric, made from a blend of cotton, viscose, polyester, and nylon, creates a rich texture that perfectly suits a formal setting. The sofa's graceful, French-contoured top adds a refined silhouette that embodies timeless elegance.*



## *Detailing*

*The frame is made from solid Sapelli mahogany and finished in a rich dark walnut color. Bear and claw-carved legs add a touch of finesse, enhancing the sofa's classic design.*

*Each sofa we craft is crafted with unwavering attention to detail. We blend artisanal skill with a commitment to sophisticated design. Every curve, contour, and texture is carefully considered, resulting in a piece that exudes both style and durability, making it a true reflection of our dedication to creating timeless, high-quality furniture.*





## Inspiration

Inspired by the elegance of Louis XV style, this three-seater sofa embodies the timeless grace of classical French design. Its luxurious Cigarelllo fabric from the House of Atmosphere, featuring a bold herringbone pattern, adds visual texture and sophistication. The sofa's refined, French-contoured top provides a graceful silhouette that enhances any formal space. Every element, from the sweeping curves to the intricate detailing, reflects a commitment to superior craftsmanship and elegance.

## Polish and Finish

The frame of this exquisite sofa is crafted from solid Sapelli mahogany, known for its durability and rich appearance. Finished in a deep dark walnut hue, the frame exudes warmth and depth. The standout feature is the bear and claw-carved legs, meticulously hand-carved to add a touch of finesse and classical refinement to the overall design. The craftsmanship behind the frame not only ensures the sofa's structural integrity but also enhances its aesthetic appeal.

## Upholstery

Upholstered in the luxurious Cigarelllo fabric, this sofa marries comfort with style. The fabric's unique blend of cotton, viscose, polyester, and nylon creates a plush, rich texture while ensuring durability and long-lasting appeal. The striking herringbone pattern offers a contemporary twist, perfectly complementing the classical design of the sofa. Each sofa is upholstered with precision, ensuring that the fabric enhances the form and lines of the piece while providing comfort and visual interest.

## Dimensions

### Outer Dimensions

**84 inches** wide x **35 inches** height x **31 inches** depth

### Inner Dimensions

**76 inches** wide x **22.5 inches** depth

### Arm Rest height from seat

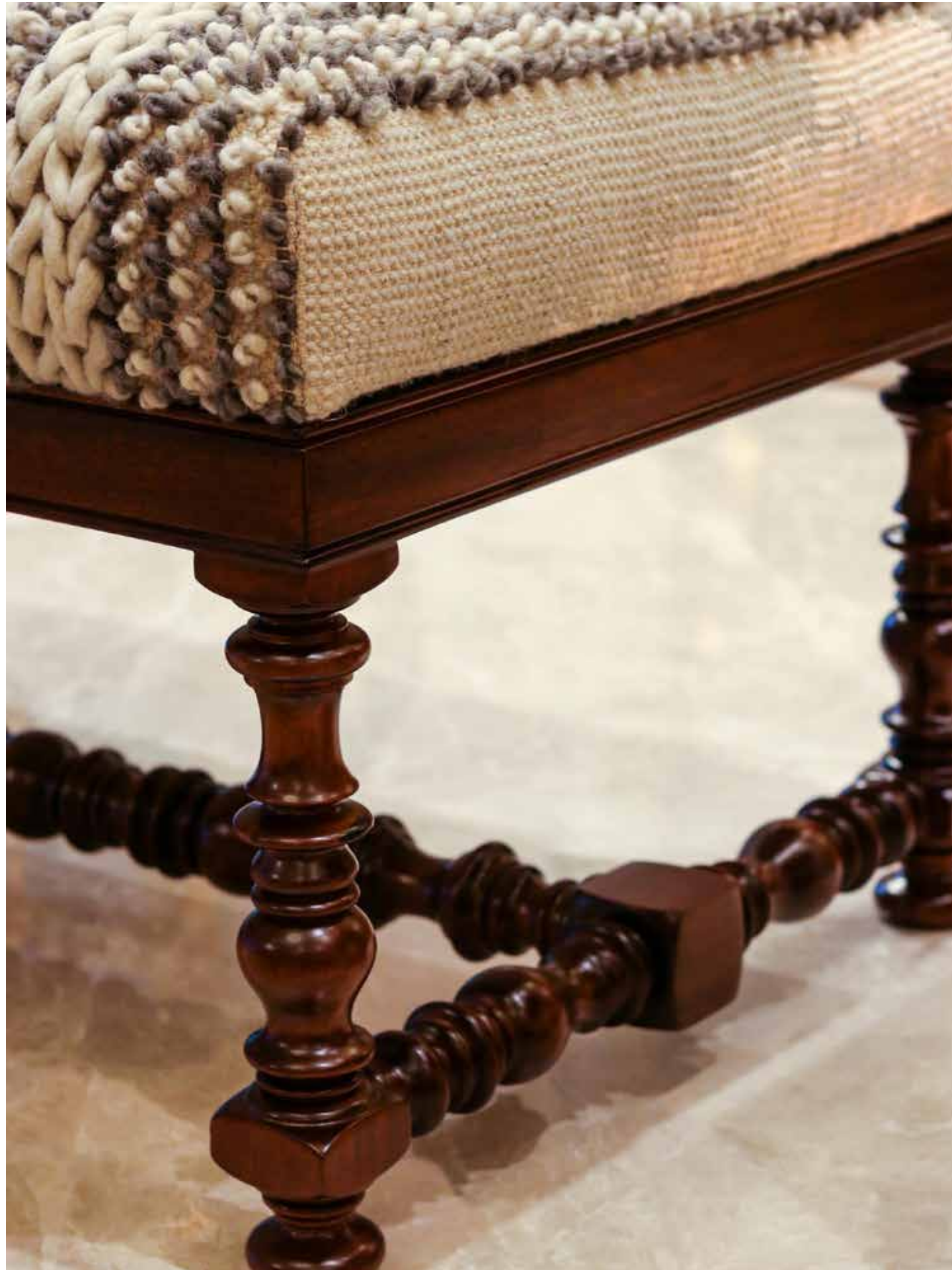
**7.5 inches** from seat

### Seat height from floor

**17.5 inches** from seat







## THE DHURRIE BENCH

### *Inspiration*

*This bench seat draws inspiration from classic English Tudor design, with its elegant six barley twist legs reminiscent of Baroque spiral columns. The base offers a refined blend of tradition and modernity, making it a perfect informal yet stylish addition to any formal setting, providing ample seating space while maintaining a minimal footprint.*

### *Polish and Woodworking*

*Crafted from solid Sapelli Mahogany with a dark walnut finish, the frame showcases intricate woodworking. The six barley twist legs are interconnected with matching twist members, providing both structural strength and visual harmony.*

### *Upholstery*

*The highlight of this bench is its use of dhurrie fabric, traditionally found in rugs and carpets. Made from a blend of natural cotton and jute, the dhurrie adds a textural contrast to more conventional upholstery, creating an interesting and unique finish that complements the overall design.*

### *Our Craftsmanship*

*As a design-first company, we take pride in our attention to detail and high-quality craftsmanship. This bench is a prime example of our commitment to blending traditional techniques with innovative design to create a functional yet beautiful piece of furniture for any space.*

### *Dimensions*

*Outer Dimensions*

**26 inches** breadth x **21 inches** height x **70 inches** length

*Seat height from floor*

**21 inches** from floor



# THE CENTRE TABLE

## *Description*

*This stunning center table, crafted from Sapelli mahogany, embodies a clean and elegant design. Its classic yet simple silhouette makes it a versatile piece, perfect for a range of interiors. With its beautifully turned legs and subtle detailing, the table stands as a testament to timeless craftsmanship.*



## *Detailing*

*The design takes inspiration from French provincial furniture, known for its graceful curves and delicate ornamentation. The table brings a touch of European elegance while maintaining a modern simplicity, making it suitable for both traditional and contemporary spaces.*



## Design and Detail

*One of the most striking features of this table is its French turned legs. These legs gently protrude beyond the edges of the table, adding prominence and a subtle architectural flair. The sides are embellished with a four-leaf clover motif, painted in gold, which enhances the table's overall beauty and charm. This intricate detail adds a touch of sophistication without overpowering its simplicity.*

## Woodworking

*Crafted from premium Sapelli mahogany, the woodwork is meticulously executed, ensuring both durability and elegance. The fine grain of the mahogany complements the smooth lines of the design, while the turned legs showcase the skillful woodworking techniques involved in the piece's construction.*

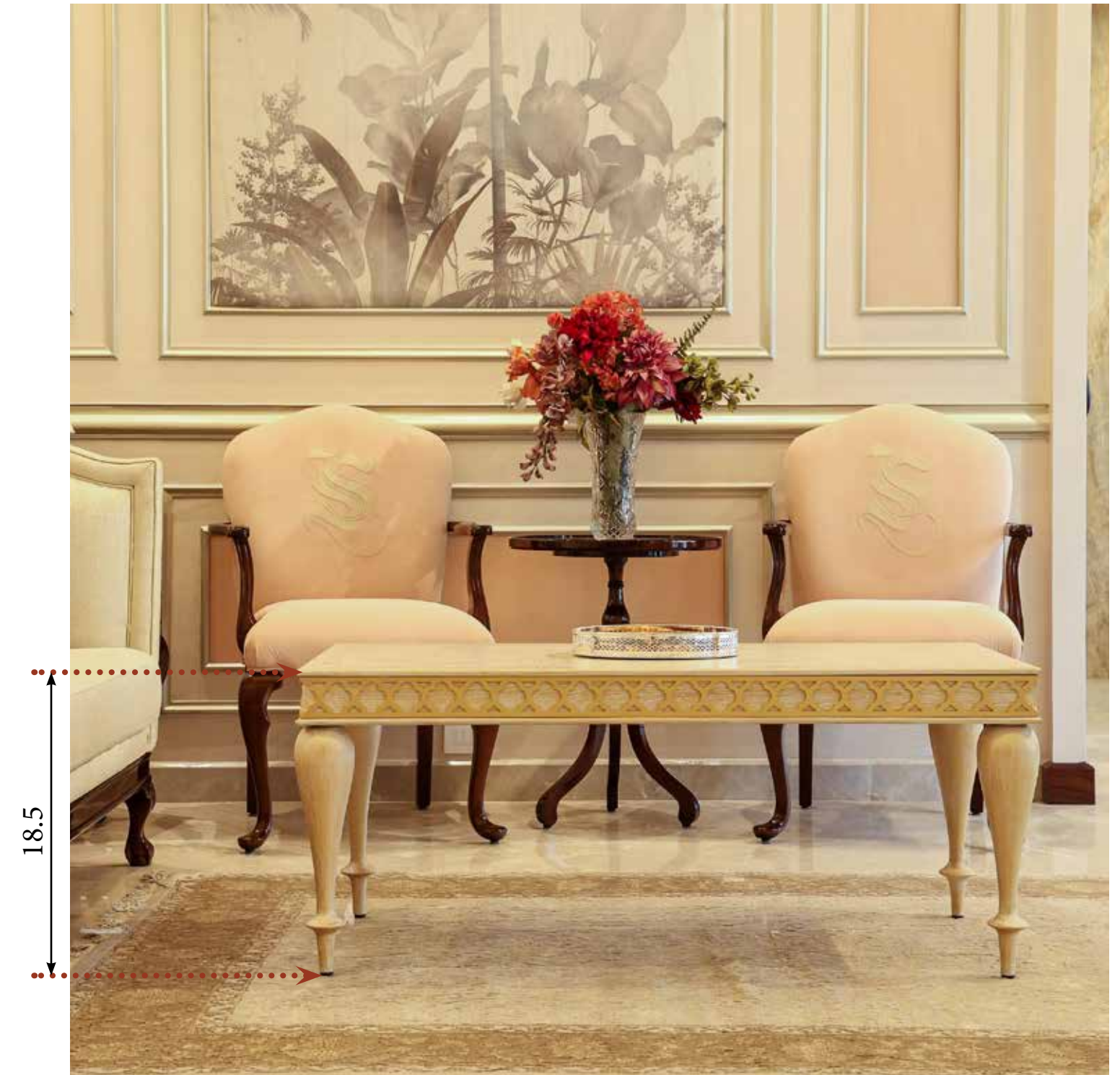
## Finishing

*The finish is a carefully distressed combination of white and gold, which highlights the curves and details of the table. The white wash gives it a soft, aged look, while the gold accents bring out the richness of the turned legs and embellishments, creating a harmonious balance between subtlety and luxury.*

## Dimensions

*Outer Dimensions*

**24 inches** breadth x **19.5 inches** height x **48 inches** length





## THE INSIGNIA CHAIRS

### *Description*

*The Insignia Arm Chairs are luxurious, bespoke pieces designed for clients seeking a high level of personalization. Upholstered in soft blush velvet with a hand-embroidered monogram, the chairs combine elegance and tradition. The humpback backrest, adorned with intricate Indian arie work, adds a touch of cultural richness.*



### *Detailing*

*Crafted from solid wood, the cabriole legs in a dark walnut finish offer a timeless aesthetic, while the armrests and piping enhance the refined design. These chairs make a sophisticated statement, blending individual style with timeless craftsmanship.*

# THE HEXAGONAL SIDE TABLE

## Design and Detail

*This stunning hexagonal side table is a true work of art, designed to captivate and complement any space. Its six beautifully curved legs resemble the elegant form of a classical French arm, lending the piece a timeless charm. The hexagonal top is adorned with intricate marquetry, showcasing fine craftsmanship and attention to detail.*

## Woodworking

*Crafted from solid wood Sapelli mahogany, this side table is a testament to expert woodworking. The smooth, curved legs provide graceful support to the top, while the hexagonal structure adds a unique geometric appeal. The intricate marquetry on the top elevates the design, combining classic French influences with modern refinement.*

## Finishing

*Finished in a high-gloss melamine with a deep dark walnut hue, the table exudes sophistication. The gloss finish not only enhances the natural richness of the Sapelli mahogany but also highlights the exquisite marquetry, giving it a luxurious sheen and refined elegance.*

## Dimensions

*Dimensions*

**22 inches** height x **20 inches** width





*These bespoke Insignia arm chairs are custom-designed for the discerning client, allowing them to incorporate their unique signature into their home.*

*Upholstered in luxurious velvet in a soft blush shade, the chairs feature an elegantly embroidered monogram, adding a personal touch of sophistication. The graceful humpback backrest is adorned with traditional Indian arie work, which beautifully accentuates the monogram and showcases exquisite craftsmanship.*

*Crafted from solid wood, the cabriole legs in a rich dark walnut finish provide a classic elegance. The profiled armrests, paired with crisp piping along the seat, enhance the refined design, making these chairs a timeless statement piece for any space.*

*Designed for clients who seek a specific level of customization, each chair reflects individual style and preference, ensuring that it not only complements the interior but also resonates with the owner's personal aesthetic.*

### **Dimensions**

#### *Outer Dimensions*

**23 inches** breadth x **23 inches** height x **38.5 inches** length

#### *Inner Dimensions*

**23 inches** breadth x **23 inches** height x **38.5 inches** length

# THE STUDY TABLE

## *Inspiration and Design*

*This study table exemplifies balanced proportions and graceful design. Its slender French cabriole legs bring a sense of elegance, while the functional aspects are seamlessly integrated. The walnut tabletop is a true highlight, featuring intricate marquetry that adds sophistication and visual interest. Each detail is thoughtfully considered, blending aesthetics with practicality to create a timeless piece.*

## *Woodworking and Design*

*The cabriole legs are adorned with delicately carved floral motifs, painted in a deep smoky grey. The finish subtly reveals the wood grain beneath, merging classical craftsmanship with contemporary style.*



## *Polish and Finish*

*The walnut top is finished with a high-gloss melamine polish, emphasizing the wood's natural richness. This finish not only enhances the table's sophisticated appearance but also provides durability, making it ideal for everyday use. The combination of modern polish and intricate marquetry highlights the beauty of the wood and craftsmanship.*

## *Dimensions*

**30 inches** breadth x **32 inches** height x **66 inches** length









## THE STUDY CHAIR

### *Inspiration and Design*

*This beautifully crafted chair is a remarkable example of modern design meeting traditional craftsmanship. Made from solid mahogany, the chair's structure is painted in a sleek nardo grey, creating a contemporary contrast to its classic form. The slender legs not only offer a sense of refinement but also enhance its balanced proportions, ensuring the chair is as visually appealing as it is functional.*

*The seat is draped in luxurious ochre leather, fastened with brass pins, adding a warm, elegant touch to the overall design. The combination of the smooth grey finish, rich leather, and brass detailing provides a harmonious blend of textures and colors, making the chair sophisticated and timeless.*



*Designed to complement other furniture pieces, such as a matching study table, this chair is perfect for exhibitions or high-end interiors. Its attention to detail, from the slender legs to the intricate upholstery work, showcases a dedication to quality and craftsmanship. With its graceful proportions and luxurious materials, this exhibition chair is more than just a seat; it's a work of art that elevates any space.*

### ***Dimensions***

#### *Outer Dimensions*

**23 inches** breadth x **40 inches** height x **23 inches** length

#### *Seat Dimensions*

**23 inches** breadth x **20 inches** deep x **17 inches** high from floor

# THE EGYPTIAN CHAIR

## Design

*This stunning Egyptian-inspired chair is a true masterpiece, embodying the perfect blend of opulence and craftsmanship. The frame, carved from solid wood, is gilded with pure gold leafing and features intricate high-relief desert motifs along the upper crest.*

*The chair's distressed patchwork fabric and rich pulled leather are influenced by Egypt's natural design philosophy, harmoniously combining earthy ochre and bold black tones.*



## Detailing

*A striking dual-tone black and white palette complements the luxurious materials, making this chair an extraordinary statement piece for any sophisticated home. Crafted by skilled artisans, it showcases an impeccable attention to detail, reflecting a dedication to both art and heritage.*

## Dimensions

*Outer Dimensions*

**42 inches** height x **27 inches** width x **23 inches** depth

*Seat Dimensions*

**17 inches** from floor



25 inches

17 inches



## THE BAKER CHAIR

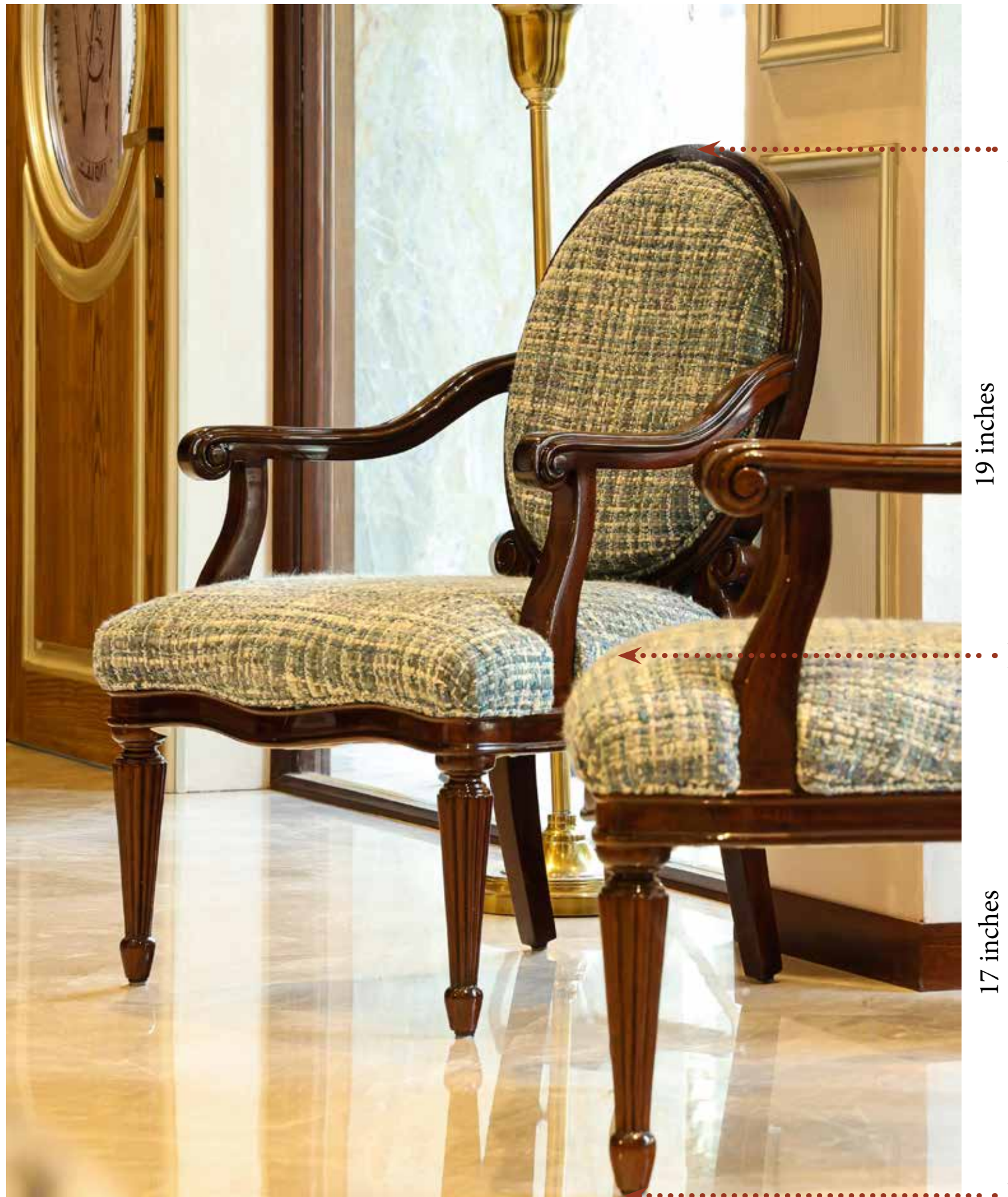
*The \*Classic Baker Chair\* is a perfect example of how traditional design can be infused with modern elements to create a timeless piece. Crafted from solid Sapelli mahogany, the chair's frame is meticulously detailed with intricate floral motifs along its base and an elegant shell motif crowning the top of the frame. Finished in a rich dark walnut, the woodwork exudes a sense of warmth and sophistication that honors classic design principles.*

*What truly sets this chair apart is its bold upholstery choice. Covered in boucle fabric with a distressed look in shades of blue and white, the textured fabric adds an unexpected, modern twist to the chair's classical form.*



*The juxtaposition of the soft, casual fabric against the detailed, ornate wooden frame brings both balance and contrast, making the Baker Chair a statement piece in any room.*

*Designed for both comfort and style, the chair combines luxurious materials with exceptional craftsmanship. It serves not only as a functional seating option but also as a sculptural work of art, perfectly suited for elegant living spaces or cozy study nooks. A true masterpiece, the Baker Chair seamlessly merges the past and present, making it an essential for any discerning interior.*

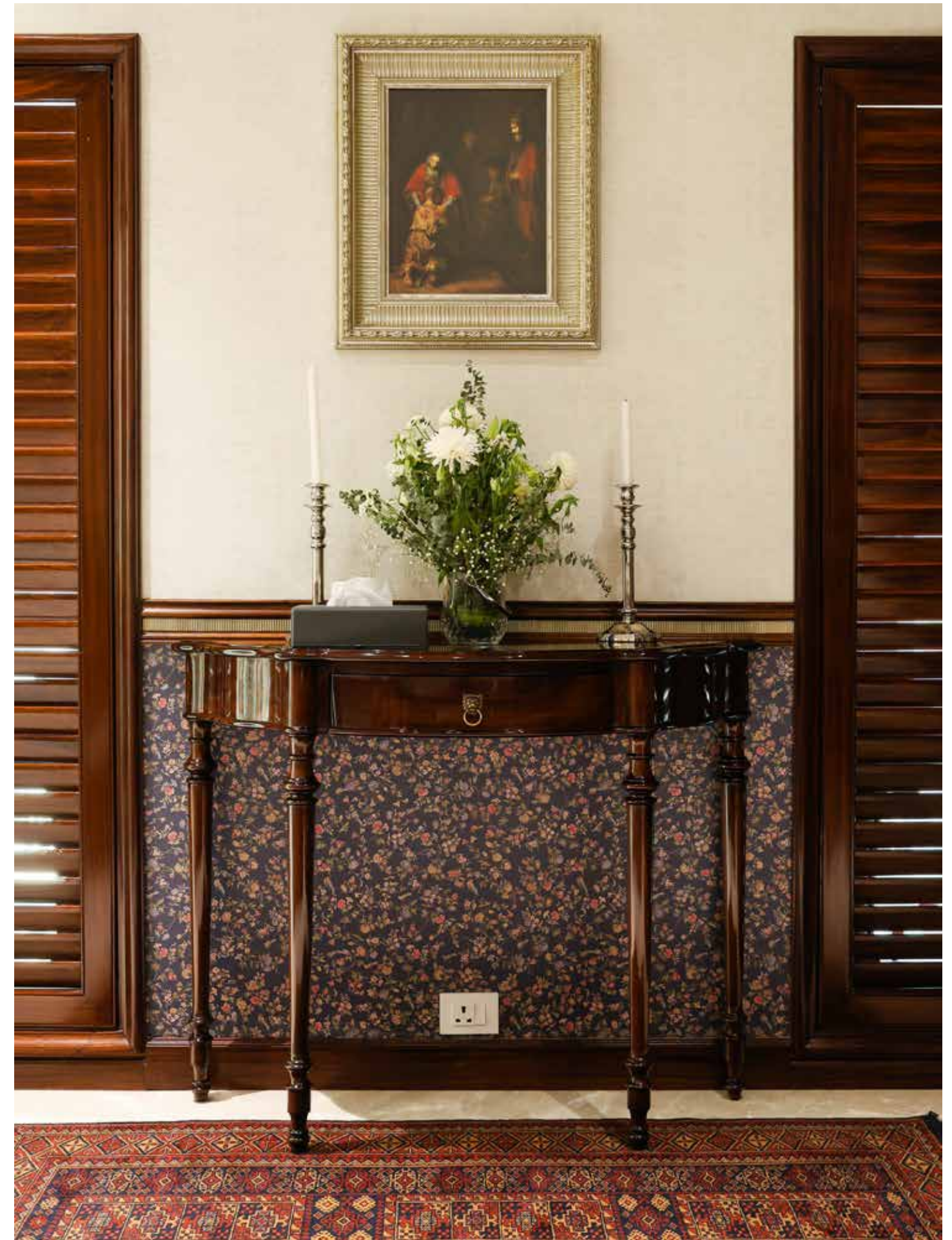


# THE CONSOLE TABLE

*Crafted from solid mahogany wood, this elegant console table is a perfect blend of timeless design and practical functionality, making it an ideal addition to any room. Finished in a high gloss melamine polish, the table radiates warmth and richness, showcasing the beautiful grain and natural luster of mahogany. The luxurious sheen enhances the depth of the wood, adding a layer of sophistication that easily catches the eye.*

*One of the standout features of this console is its beautifully crafted legs. Each leg is delicately turned and tapered, lending an air of grace and finesse to the piece. The legs are proportioned to provide excellent stability while maintaining a slender profile, which makes this console suitable for narrow spaces. These thoughtfully designed legs elevate the console, giving it a light and airy feel without compromising its strength and durability. This intricate craftsmanship speaks to the level of skill and attention to detail involved in creating this piece, honoring the tradition of fine wood-working.*

*Measuring just the right depth, this console is an excellent choice for smaller spaces. It's slim enough to fit snugly in entryways, hallways, or even between windows without overwhelming the space. Despite its compact form, it provides just enough surface area to accommodate decorative items such as vases, picture frames, or candles, adding a touch of personality and warmth to any setting. A small drawer provides discreet storage, keeping keys or other essentials within easy reach.*





### **Design and Inspiration**

*Inspired by timeless neoclassical designs, this mahogany console table captures elegance and sophistication in a compact form. Its sleek lines and refined silhouette reflect a dedication to craftsmanship, with subtle detailing that enhances its classic appeal.*

### **Woodworking and Finish**

*Crafted from solid mahogany, the console features a high gloss melamine polish that highlights the rich grain and natural beauty of the wood. The smooth, lustrous finish not only enhances the depth of the mahogany but also offers lasting durability, ensuring it remains as striking as the day it was crafted.*

### **Utility**

*Designed for versatility, this console fits seamlessly into smaller spaces like entryways, hallways, or living rooms, providing an ideal surface for decorative accents or essentials. With its slim profile and graceful legs, it combines style and practicality, adding a touch of luxury to compact areas without taking up much space. This piece perfectly balances aesthetics and functionality, making it a refined choice for modern and traditional interiors alike.*

### **Dimensions**

*Outer Dimensions*  
**36 inches** height x **48 inches** width x **18 inches** depth

# THE LIBRARY UNIT

*This exquisite library unit, crafted from solid Sapelli mahogany, is a refined blend of elegance and practicality. With a rich dark walnut finish, it stands as a statement piece in any room, adding warmth and depth. The lower section features beautifully panelled drawers, providing ample storage for discreet organization. Above the drawers, open shelves ascend to the top, ideal for displaying books, artifacts, or personal collections. The unit is crowned by an intricate clover design, a subtle yet captivating detail that reflects artisanal skill. Delicate grooved partitions and ornamental motifs on the vertical dividers further enhance its sophisticated appearance.*

*Designed with flexibility in mind, this library unit is customizable to meet individual client needs, whether that involves adjusting shelf heights or adding extra drawers. The combination of form and function makes it a perfect addition to living rooms, studies, or offices, blending seamlessly with classical or modern interiors. This unit is more than a storage solution – it's a celebration of handcrafted beauty, intended to elevate any space.*







## Design and Inspiration

*Inspired by timeless elegance, this library unit combines classic motifs with a practical layout. The clover design at the top and detailed grooved partitions with motifs lend a refined charm, ideal for those who appreciate traditional craftsmanship.*

## Woodworking and Finish

*Constructed from premium Sapelli mahogany, the unit reflects the rich, natural texture of this fine wood. The panelled drawers and grooved details showcase meticulous woodworking, highlighting the dedication to quality.*

## Polishing

*The dark walnut finish provides a luxurious, deep color that enhances the wood's natural beauty. The polish adds durability, ensuring a lasting finish that retains its sheen over time.*

## Utility

*This unit serves as both a functional and decorative piece. With drawers for concealed storage and open shelves for display, it's perfect for organizing books, art, or memorabilia..*

## Importance of the Library Unit

*A library unit brings character and structure to any room, serving as a focal point that elevates the space. It's an essential piece for any avid reader or collector, transforming a simple room into a curated personal library..*

## Customisation

*Designed to be tailored to client preferences, this unit can be modified in height, shelf spacing, or storage options, ensuring it aligns with both aesthetic desires and practical needs.*

## Dimensions

*Outer Dimensions*

**132 inches** height x **132 inches** width x **23 inches** depth



# THE CHESTERFIELD SOFA

*This elegant Chesterfield 3-seater sofa is a masterful blend of timeless design and luxury, tailored for those with a taste for classical interiors. Its iconic Chesterfield styling, with a tufted back and rolled arms, brings sophistication and a formal look to any setting. Crafted with attention to detail, the sofa features a luxurious combination of materials: seating cushions in a rich Bordeaux suede leather and armrests and back in deep burgundy aniline leather, creating a monochromatic contrast that is both striking and harmonious. The legs, carved from Sapelli mahogany, are finished in a dark wood stain, adding a grounded elegance to the piece.*

*This sofa not only exudes charm but also provides a comfortable and spacious seating experience, making it ideal for formal living rooms or study areas. Its robust structure and meticulous craftsmanship ensure it remains a staple in your home for years to come, embodying the essence of timeless design.*



## Design and Inspiration

*The Chesterfield design dates back to the 18th century, originating as a commissioned piece by the Earl of Chesterfield. Known for its tufted detailing and rolled arms, this design quickly became an icon of sophistication, often associated with high-society spaces and formal living rooms. This 3-seater reinterprets the classic Chesterfield in a way that feels both luxurious and enduring.*

## Woodworking and Finish

*Crafted from Sapelli mahogany, the legs of this sofa are finished in a dark wood stain that highlights the deep tones of the mahogany. This polished finish adds depth to the woodwork, enhancing the overall elegance and stability of the piece.*

## Upholstery

*The seat cushions are wrapped in rich Bordeaux suede leather, offering a soft, inviting texture. The back and armrests are upholstered in premium aniline leather in deep burgundy, adding a beautifully textured, monochromatic contrast to the seating area.*

*This unit serves as both a functional and decorative piece. With drawers for concealed storage and open shelves for display, it's perfect for organizing books, art, or memorabilia.*

## Utility

*This sofa's compact but formal design makes it ideal for smaller living rooms, studies, or reception areas, where it serves as both a functional seating option and a statement piece. Its structured back and ample seating space provide comfort without sacrificing elegance.*

## Dimensions

*Outer Dimensions*

**28 inches** height x **78 inches** width x **36 inches** depth

